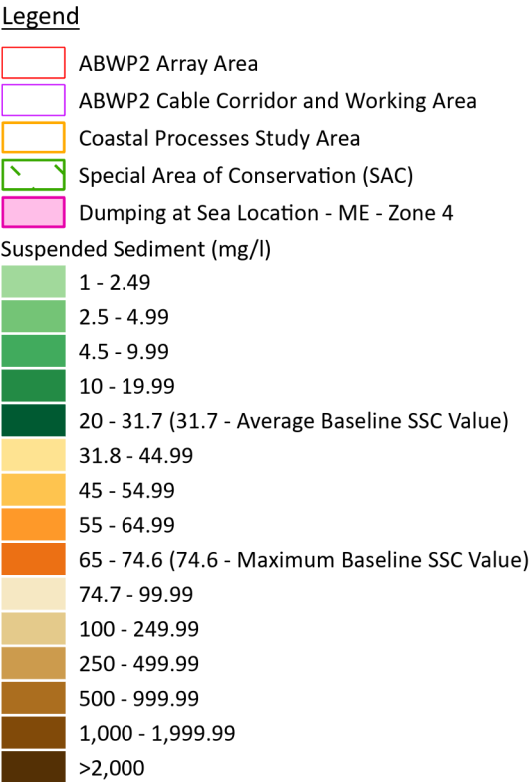
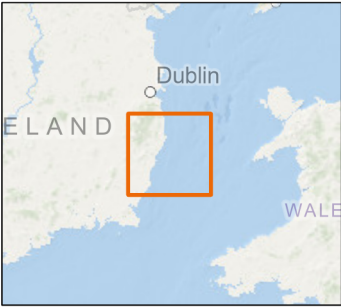


Arklow Bank Wind Park 2

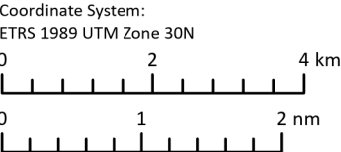
Maximum Suspended Sediment Concentrations Following Sandwave Clearance for Foundation Installation and Associated Spoil Disposal at the Zone 4 Disposal Site\*



\*Shown for a high and low current regime on a flood (northwards) and ebb (southwards) tide



**Notes**  
Esri, Intermap, NASA, NGA, USGS, OceanWise, Esri, GEBCO, Garmin, NaturalVue, Esri, CGIAR, USGS, Sources: Esri, TomTom, Garmin, FAO, NOAA, USGS, © OpenStreetMap contributors, and the GIS User Community. Contains Ordnance Survey data © Crown copyright and database rights (2022). OS OpenData.



Scale	Date	Drawn By	Checked By	Approved By
1:100,000 @ A3	13/02/2026	GB	AK	LK

Suites B2 & C2  
Higher Mill  
Higher Mill Lane  
Buckfastleigh  
Devon  
TQ11 0EN  
www.gobeconsultants.com  
+44 (0)1626 323890



Figure Number 6.17

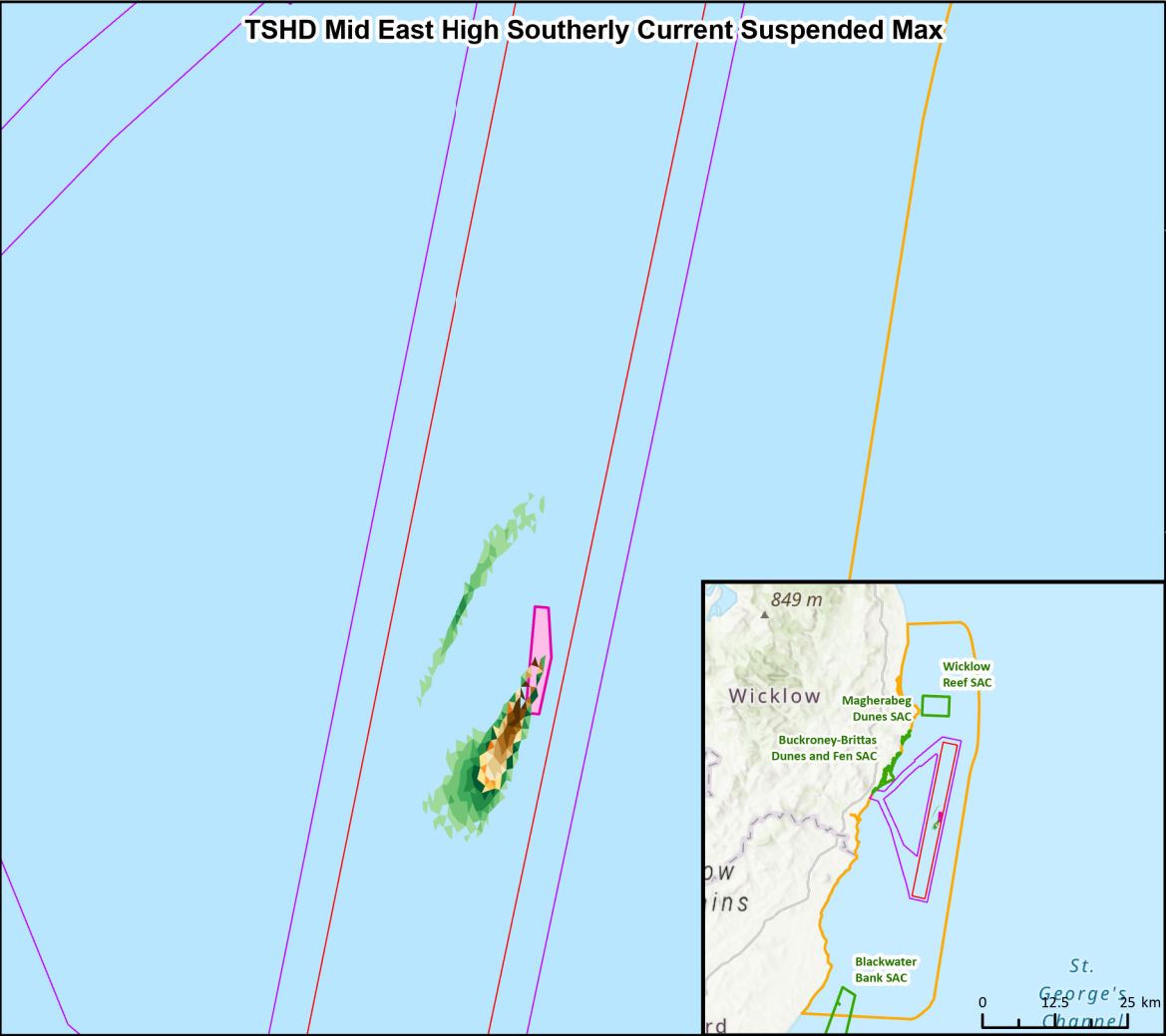
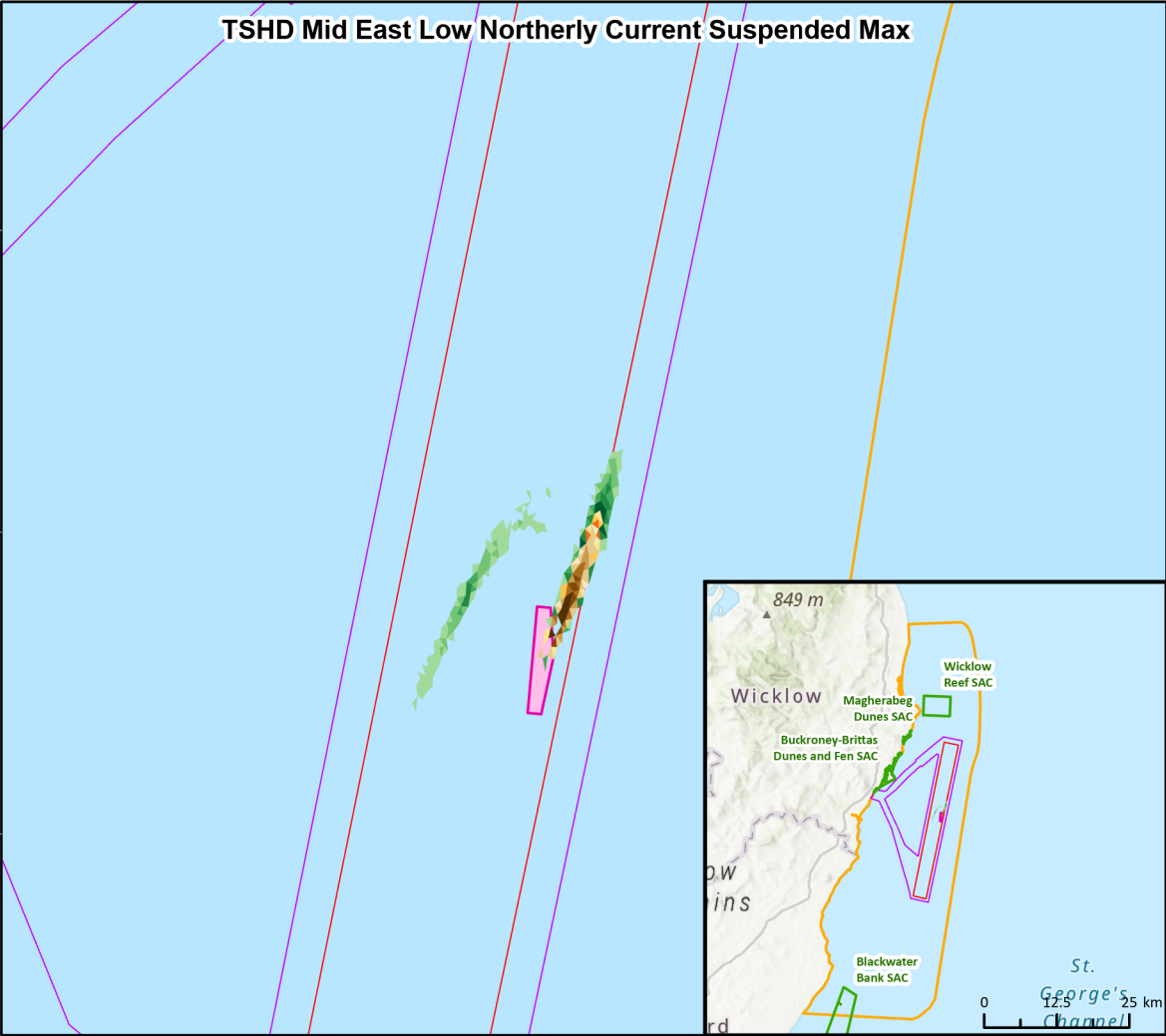
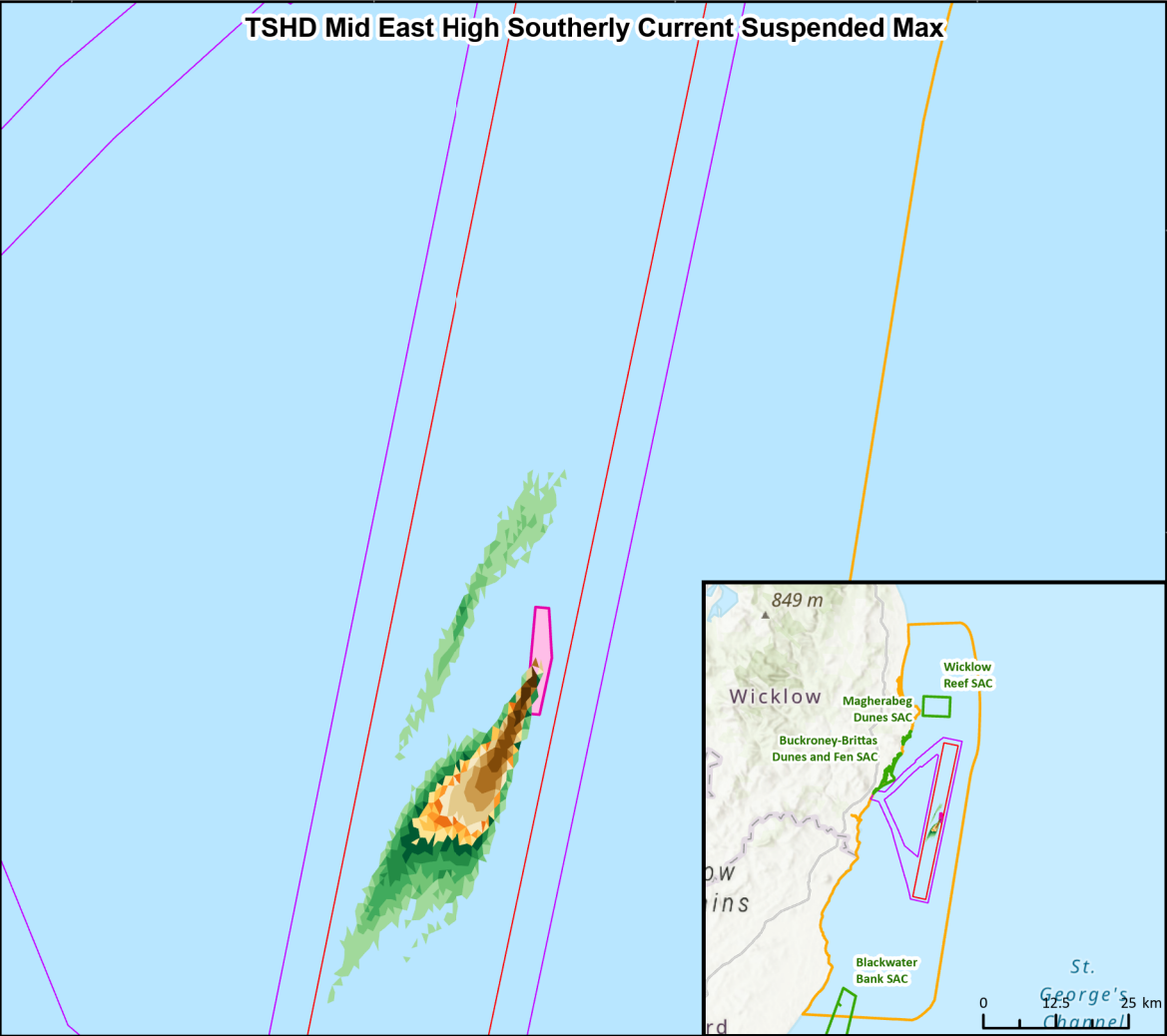
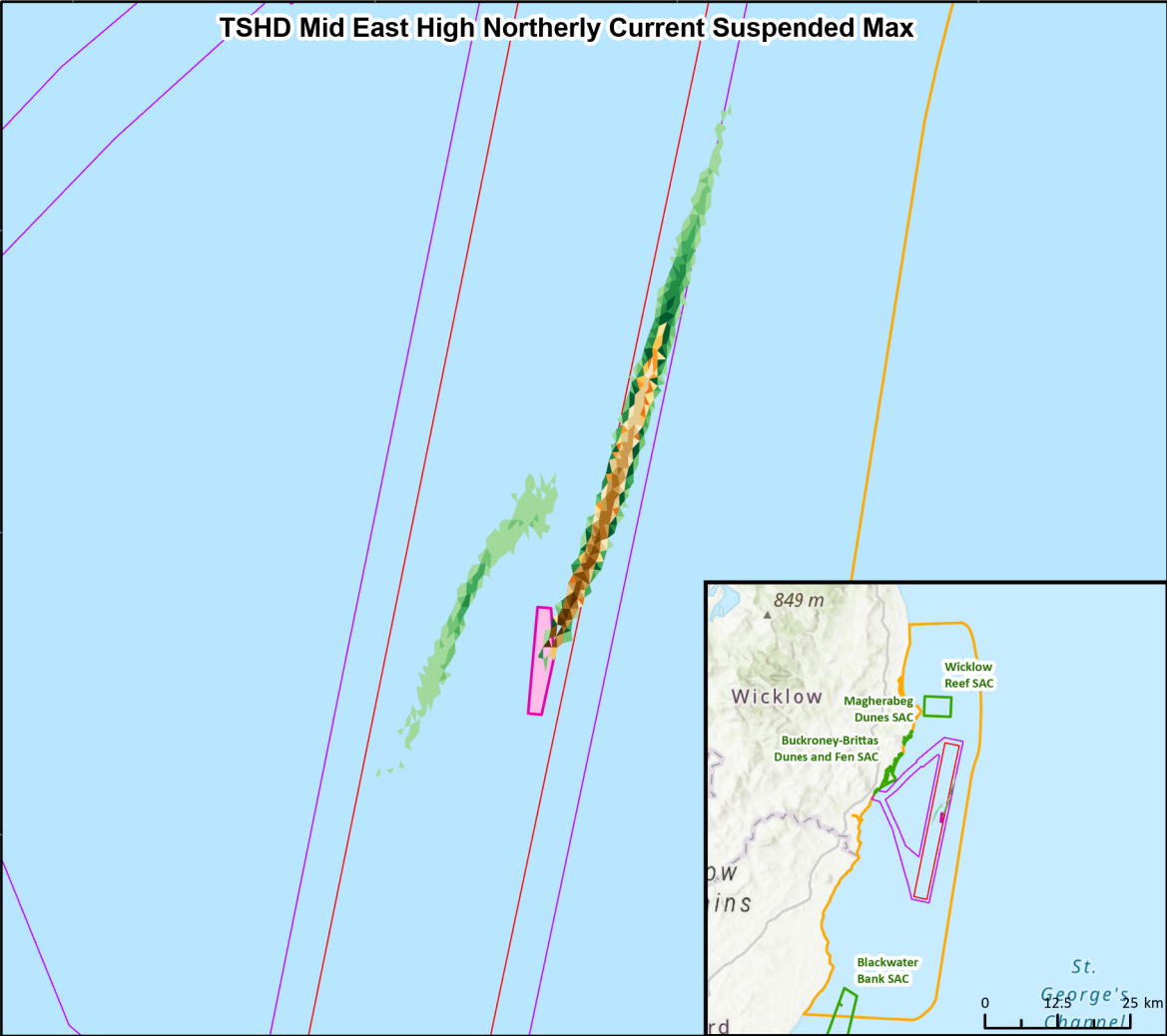


Figure Reference: Ark\_Fig6.17\_SuspendedSediment\_SandwaveClearance\_Zone4